

The background of the image is a close-up, high-angle shot of dark blue water. The water's surface is covered in fine, rhythmic ripples that catch the light, creating a shimmering, textured effect. The overall color palette is a range of blues, from deep navy to a slightly lighter, shimmering blue where the light reflects off the water's surface.

INTERVALO

O&G

INTERVALO

Celebrating the relaxed luxury and welcoming comfort of the New England summer.





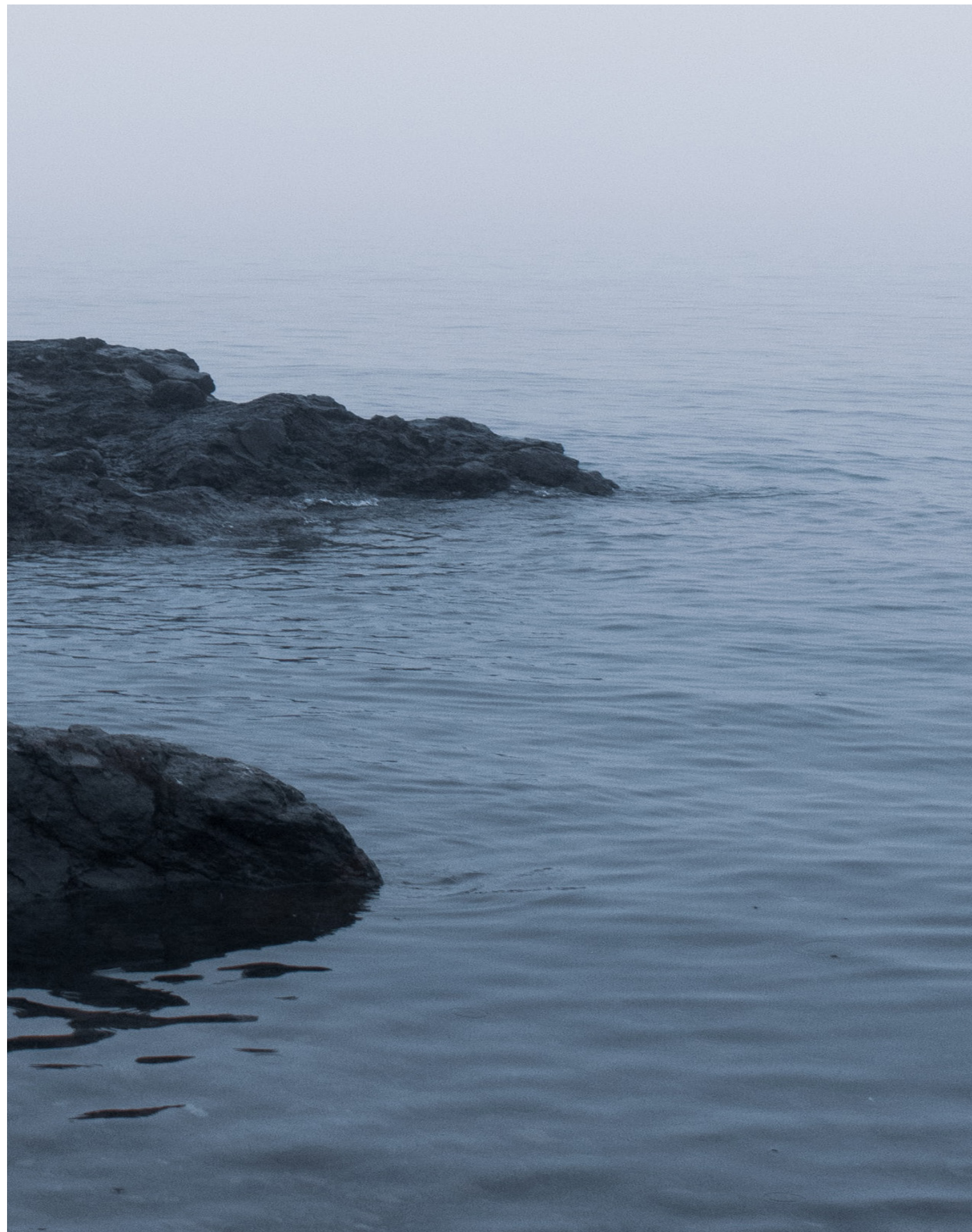
Vacation is the luxury we all need, a time to unwind, unplug and recharge with nature and friends.

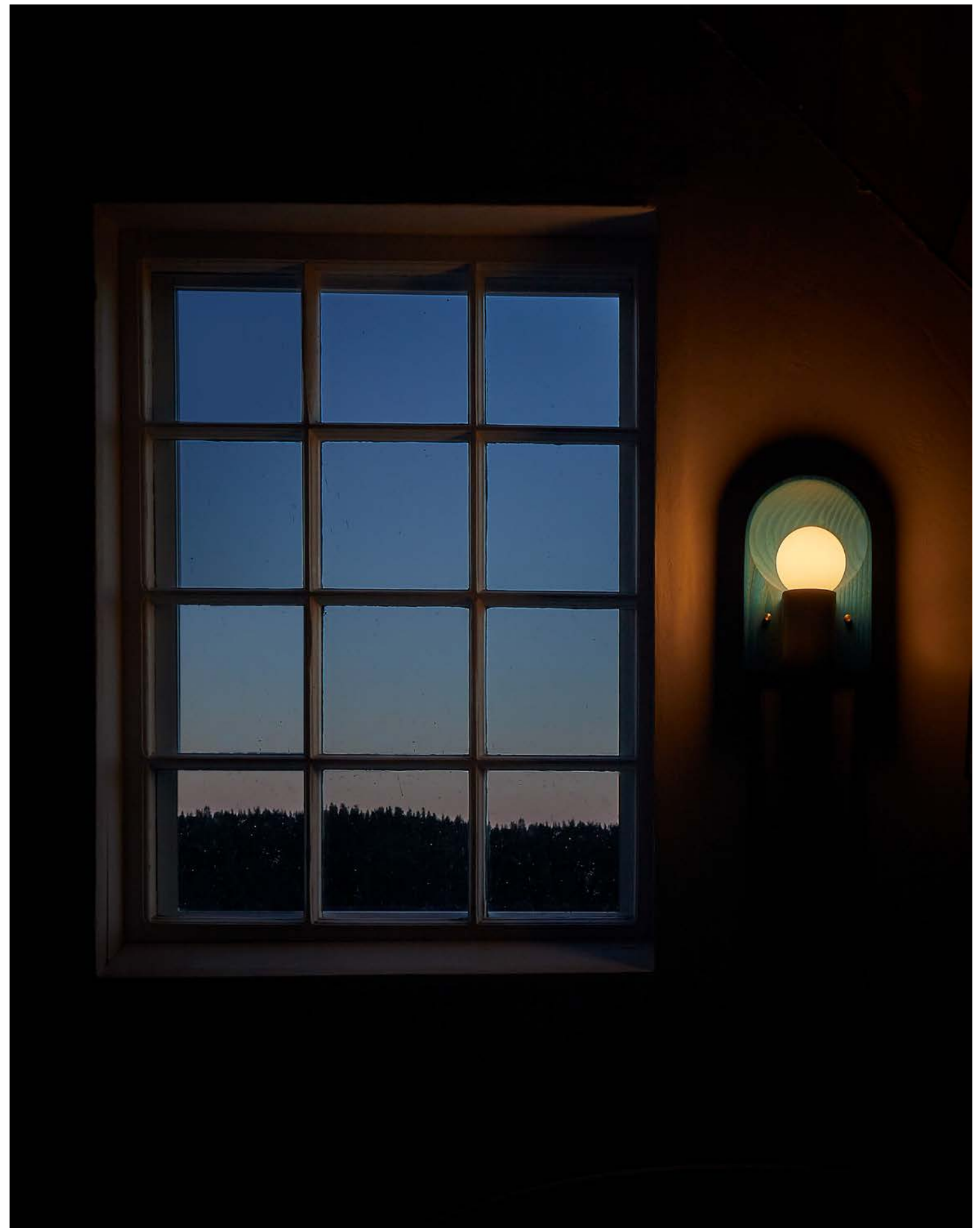
Here in Rhode Island, vacation does not necessarily mean travel. Locals are naturally averse to driving long distances, and many think it's best when you barely travel at all. The seemingly paradoxical desire to vacation without traveling works serendipitously with Rhode Island's miles of coastline and many secret corners that feel a world away from life inland.

The icon of the New England summer is the seaside home. Modest or grand, the sturdy shapes, clad in weathered cedar shingles, are casually furnished for relaxation and enjoyment, rain or shine...

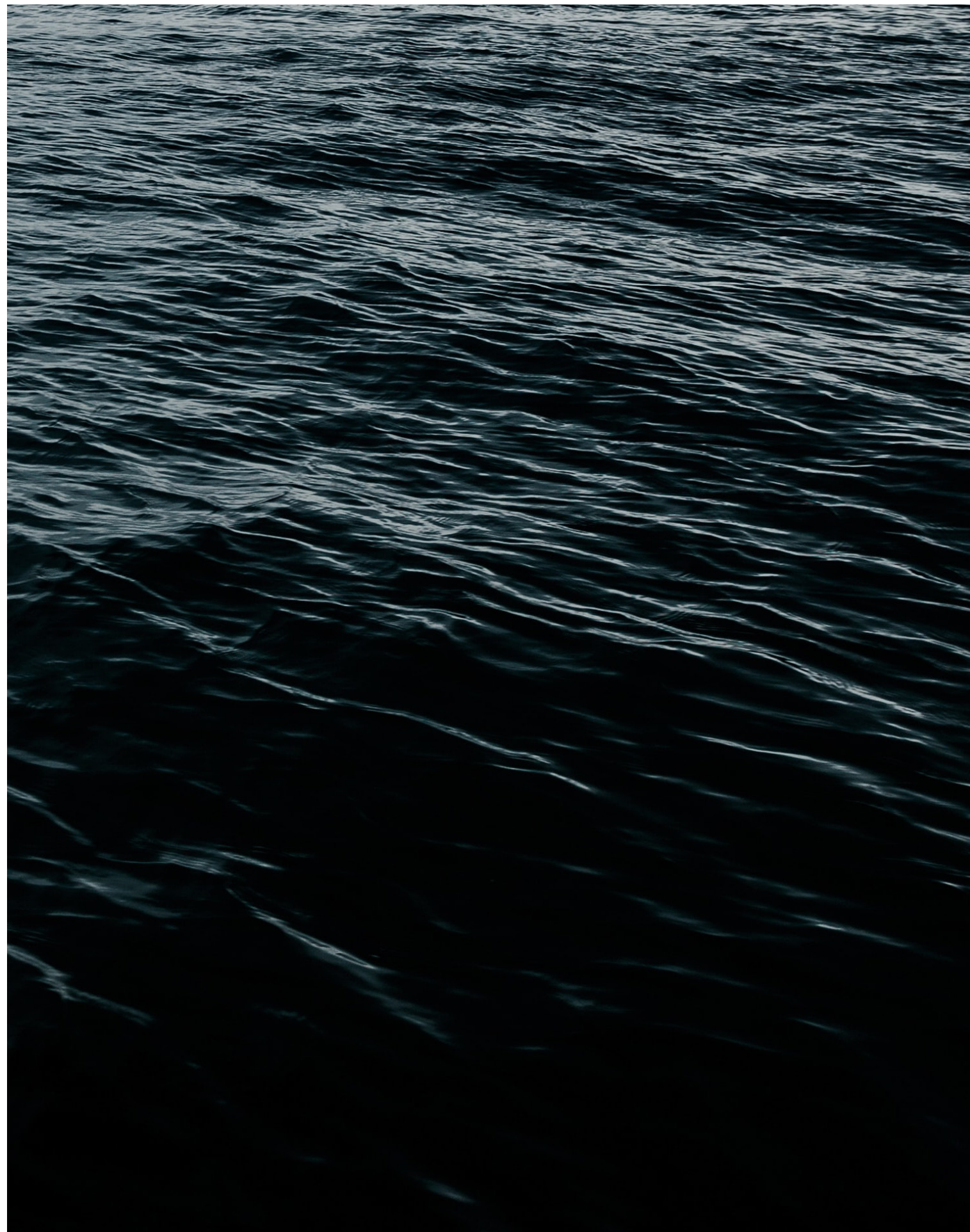










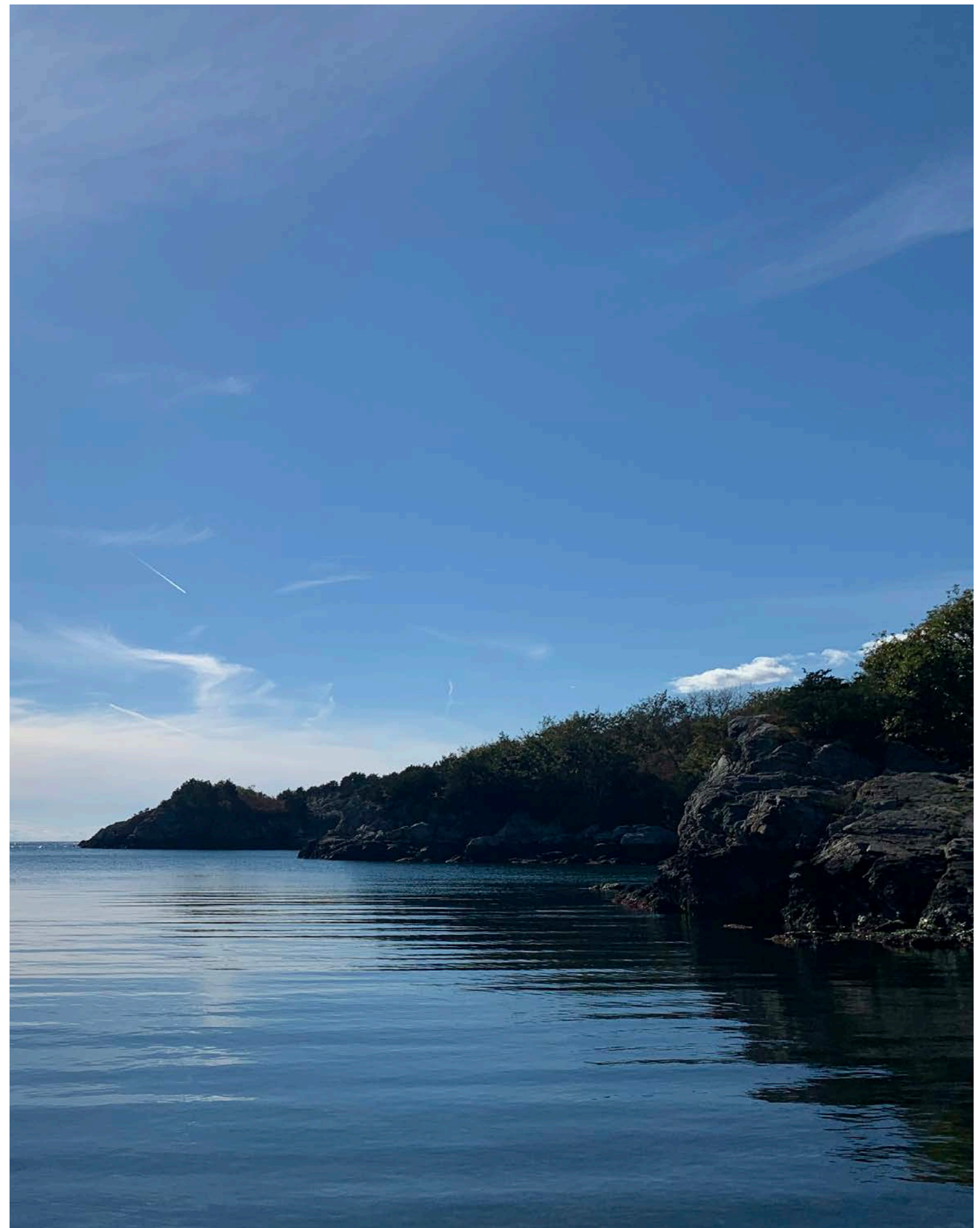


And there will be rain.

New England is famous for its changeable weather.

While a quick squall may send you indoors for the afternoon, it is just as likely to bring a beautiful sunset and refreshing breeze of cool ocean air to enjoy with an outdoor dinner.



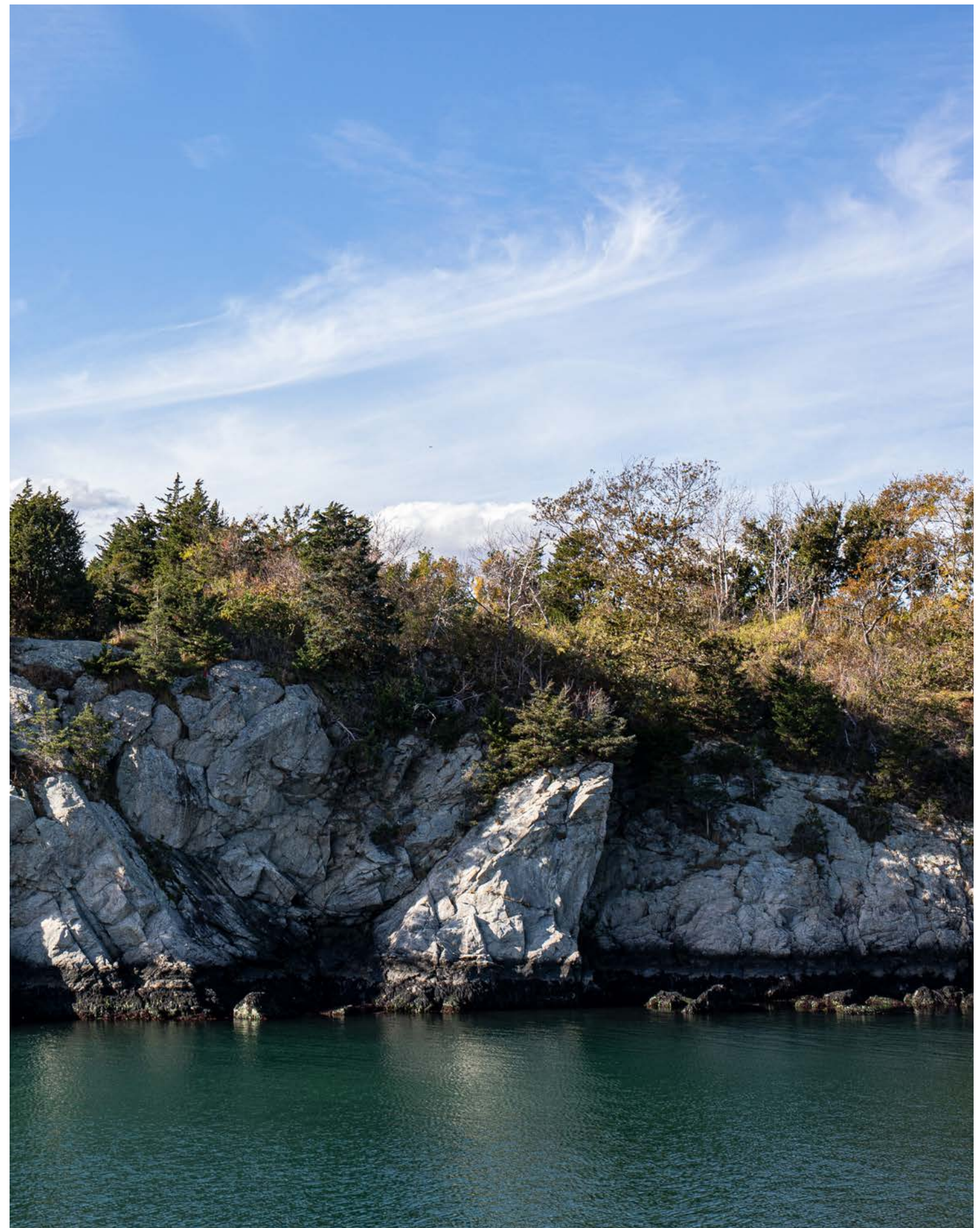


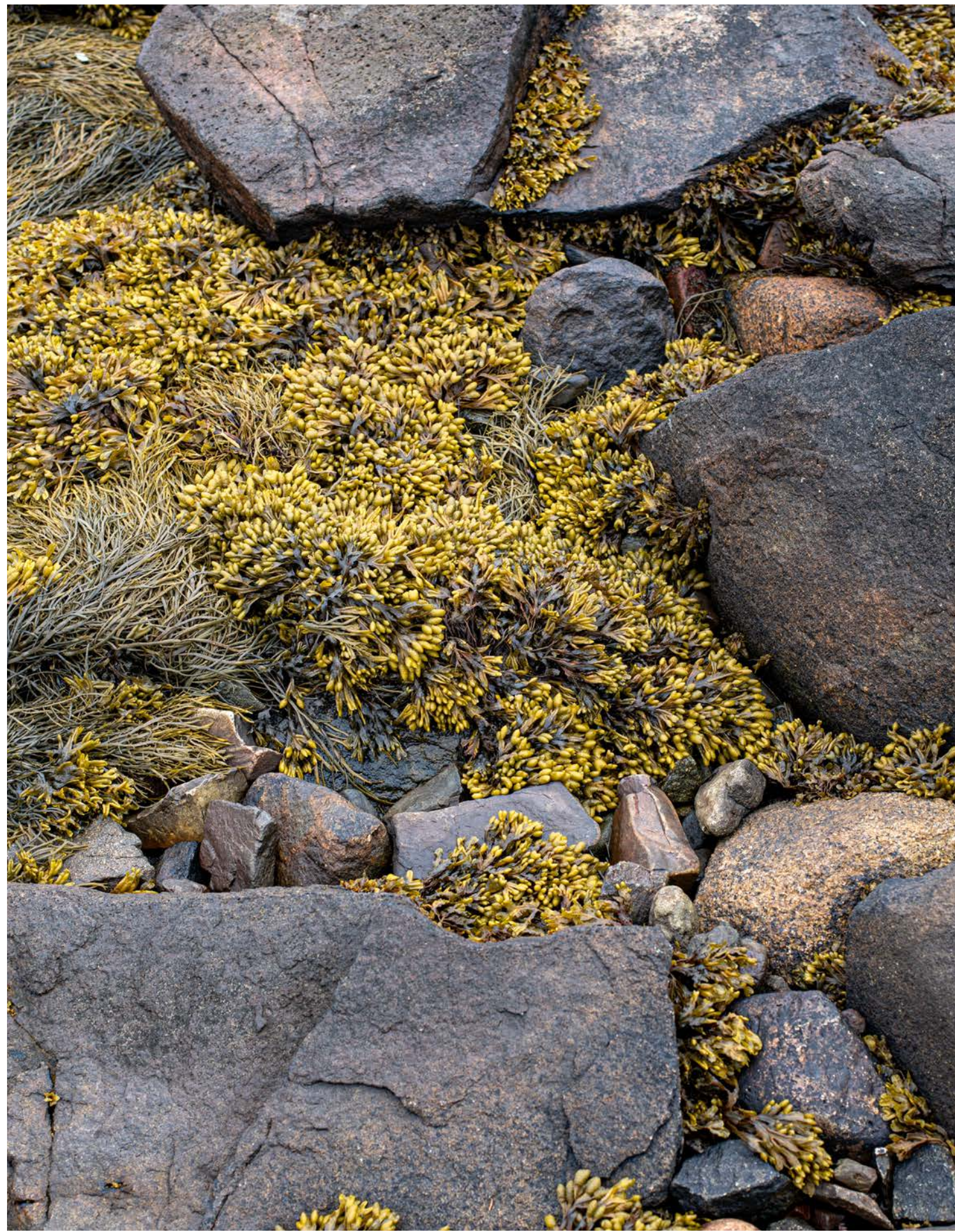


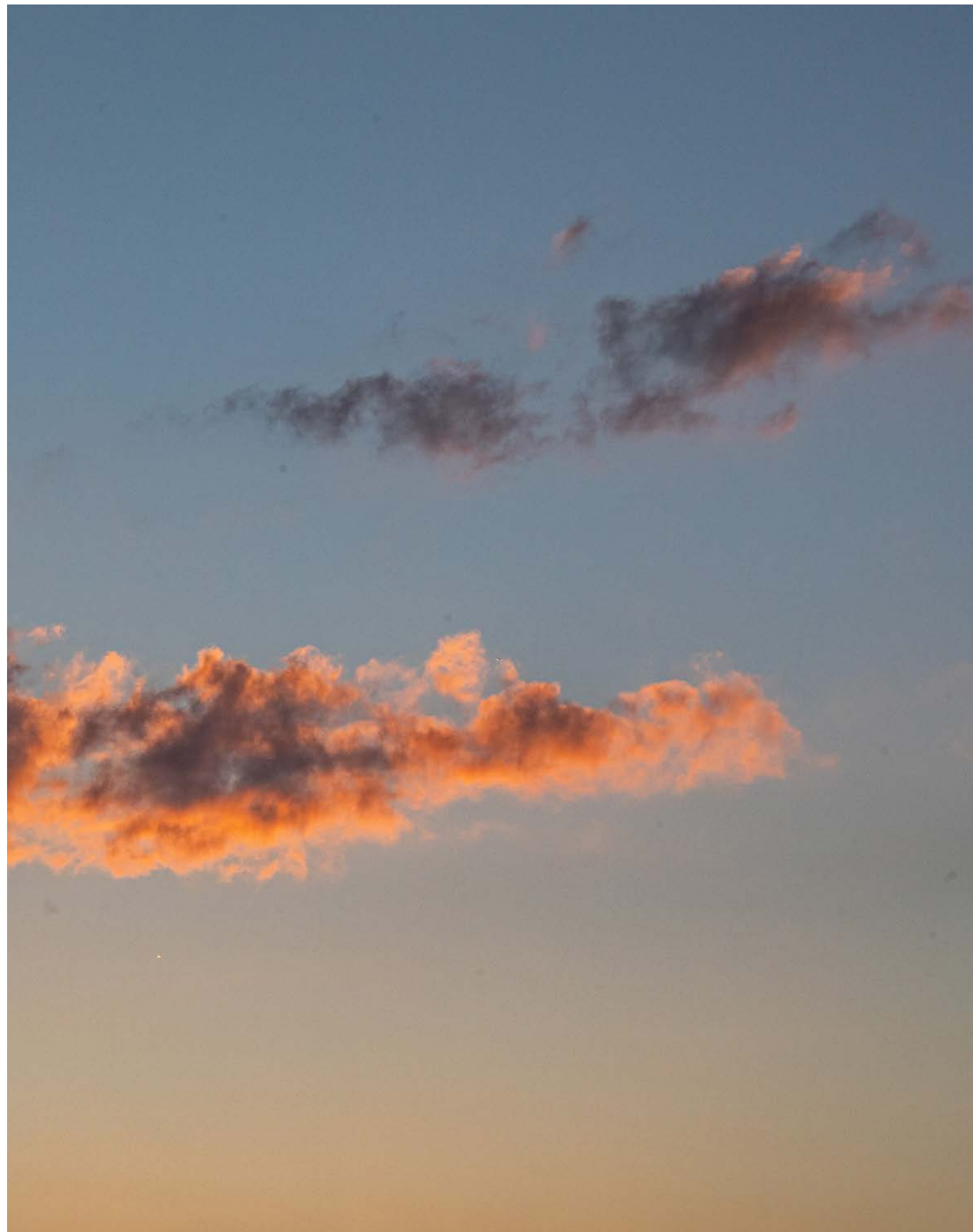


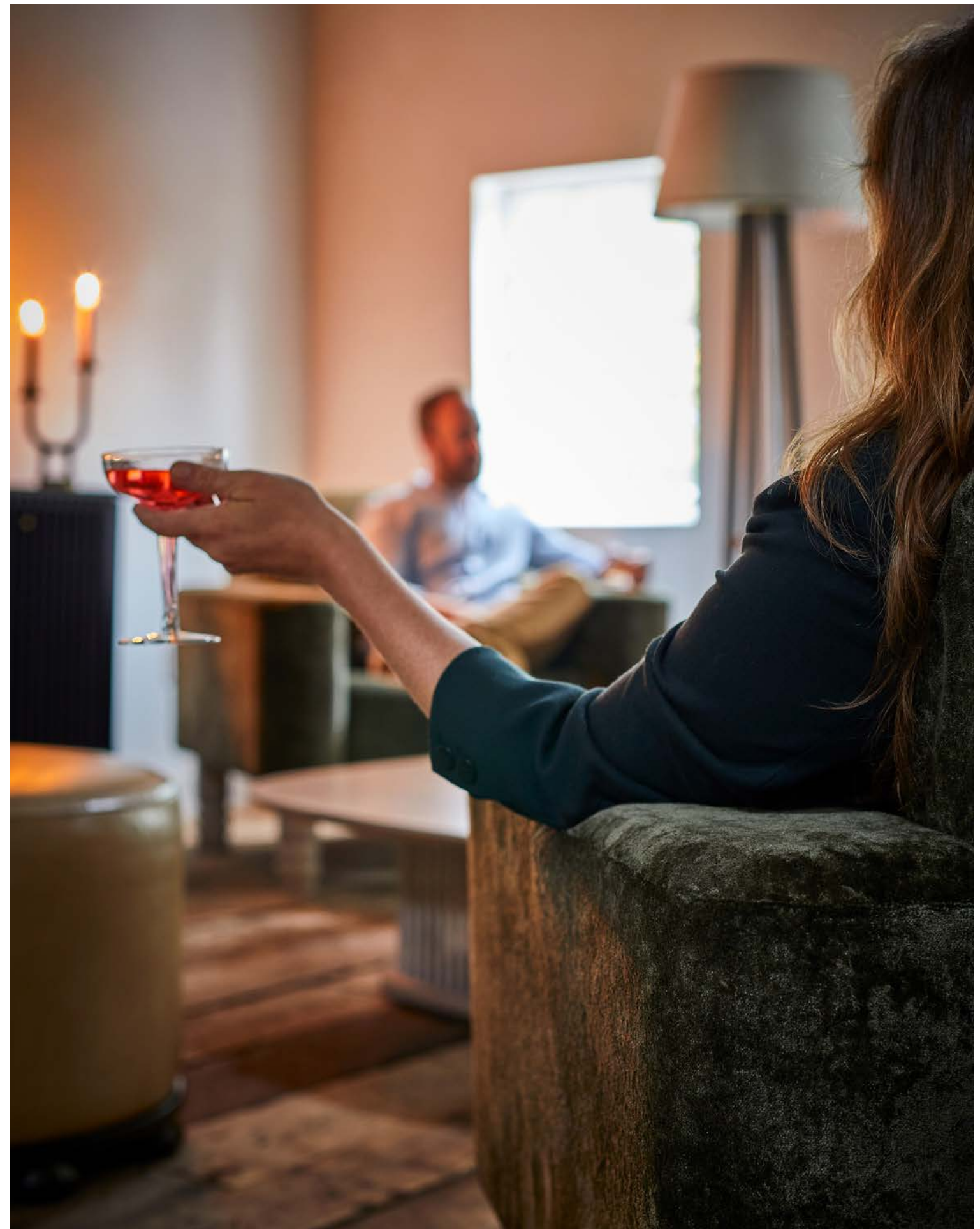
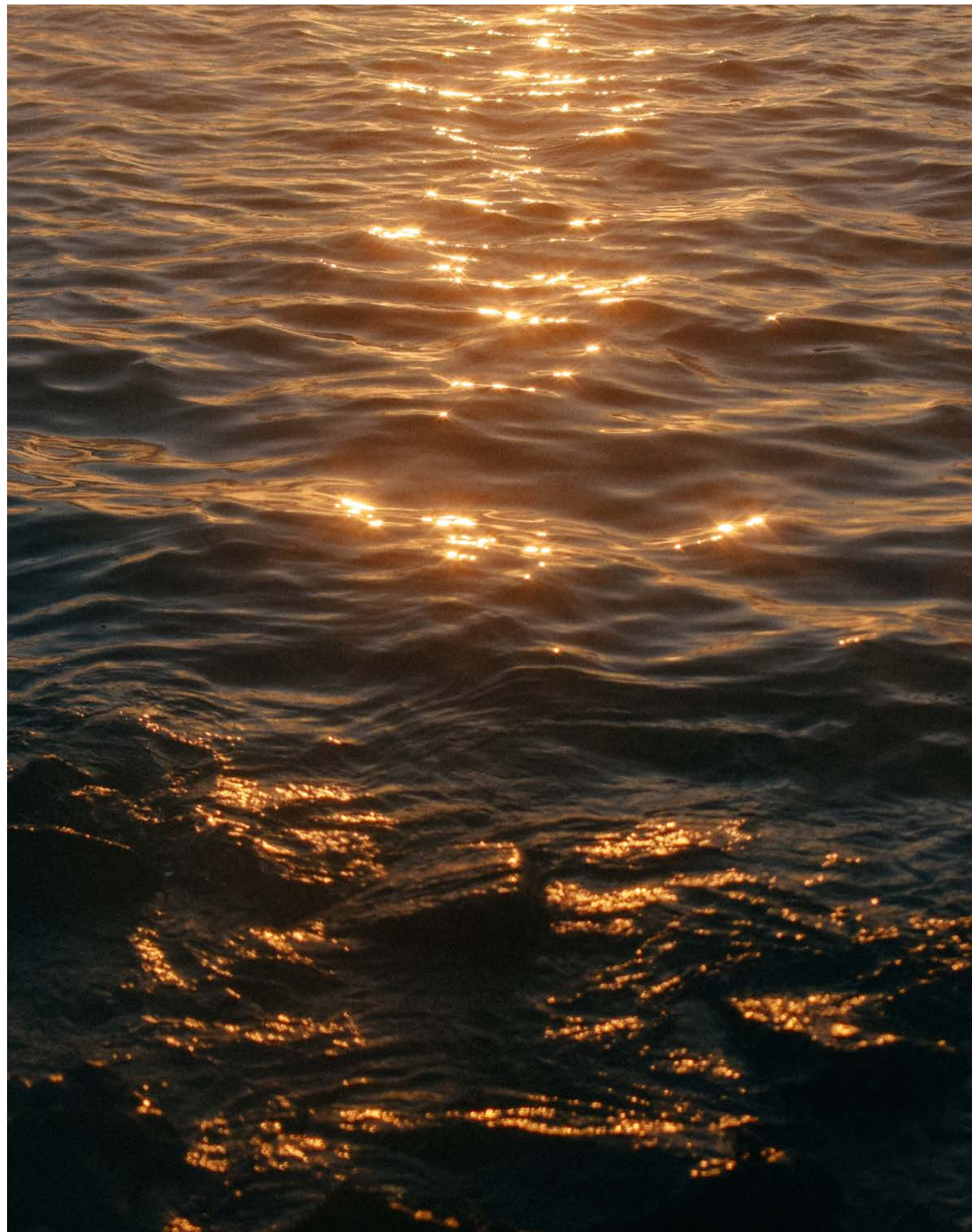
Of all the things that signify the New England summer, it may be the sea that is the most indispensable ingredient. It is mysterious and familiar, alternately a character or the stage. The sea reacts to and creates weather, perfumes the air, provides sustenance, and cleanses the soul.













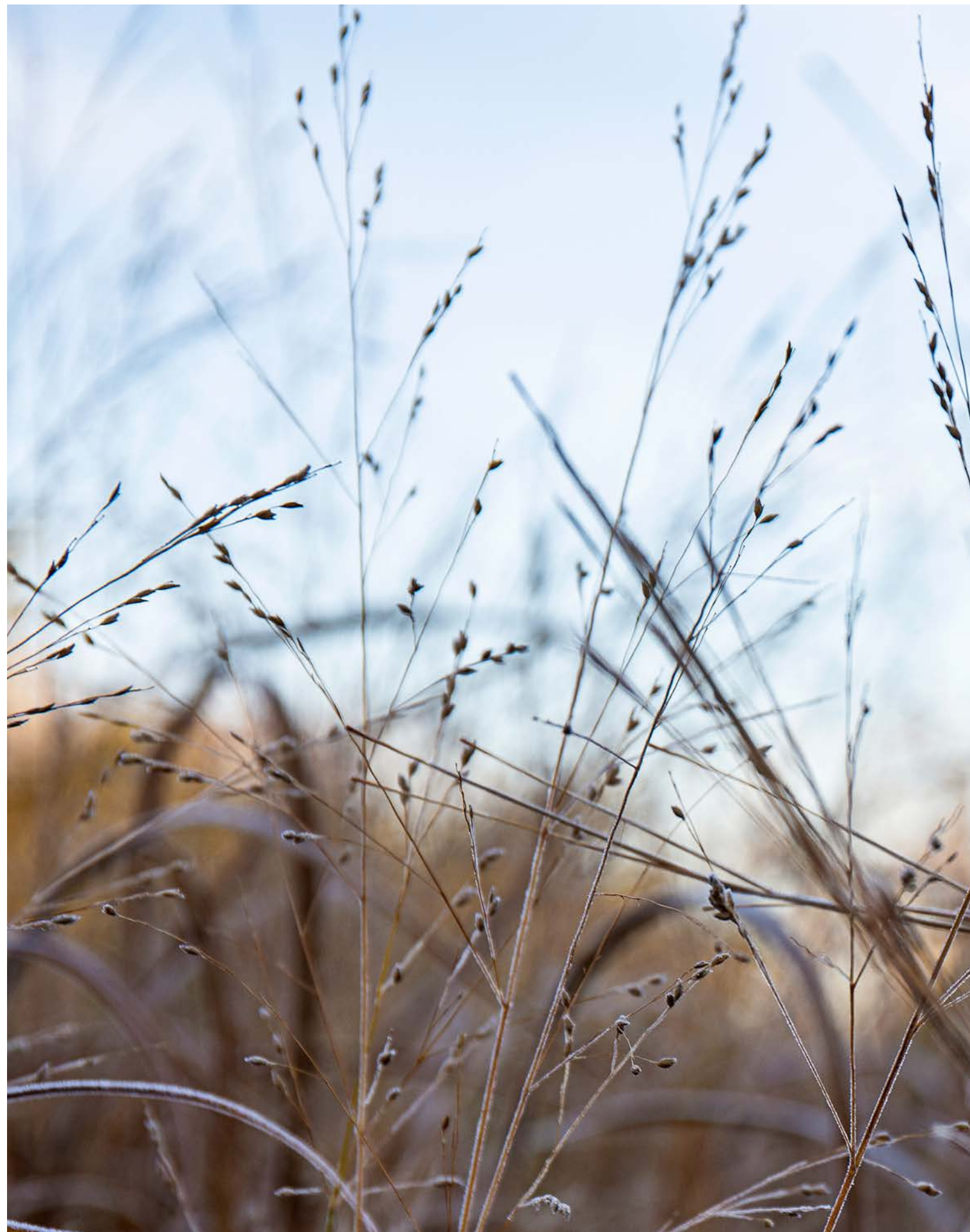




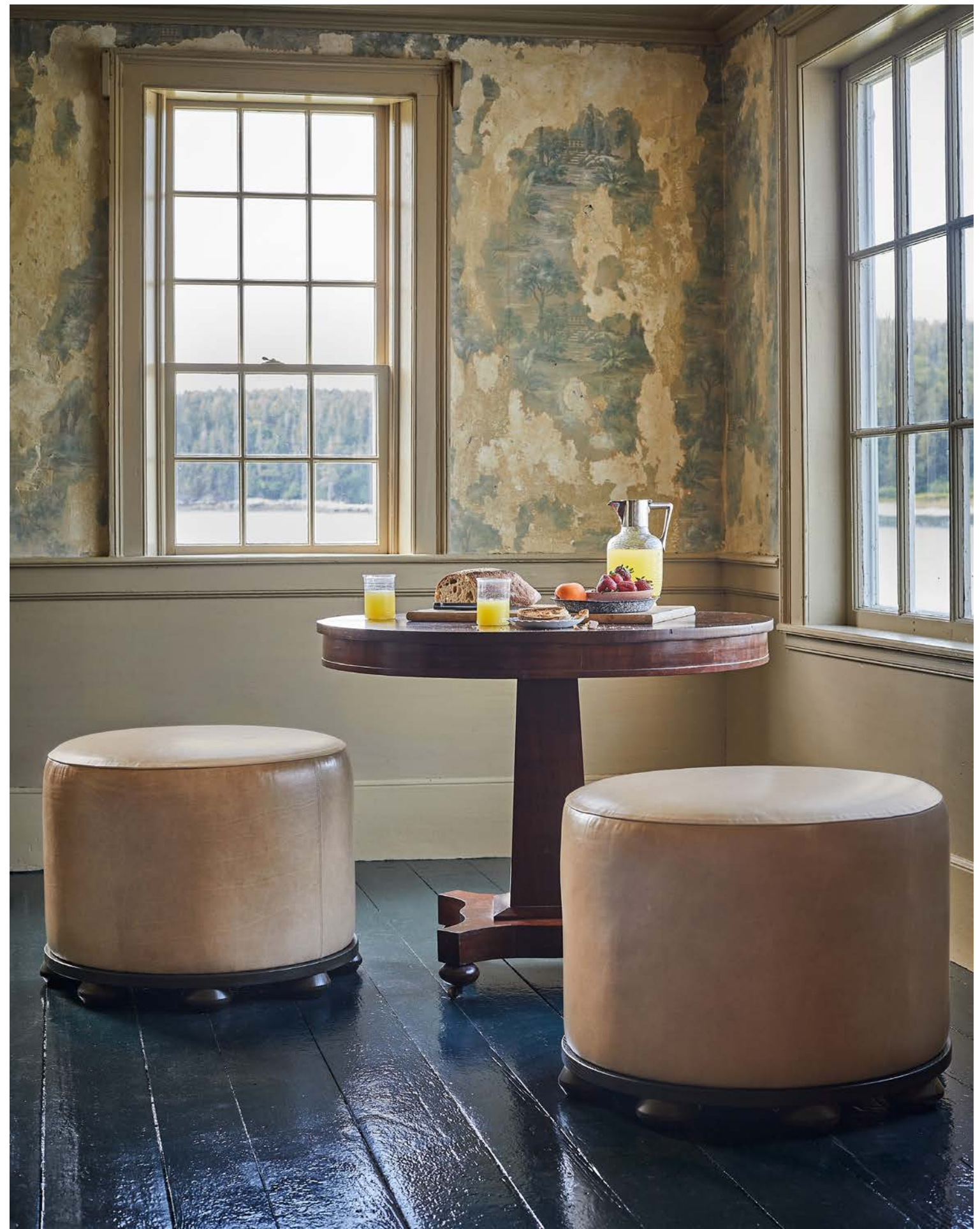


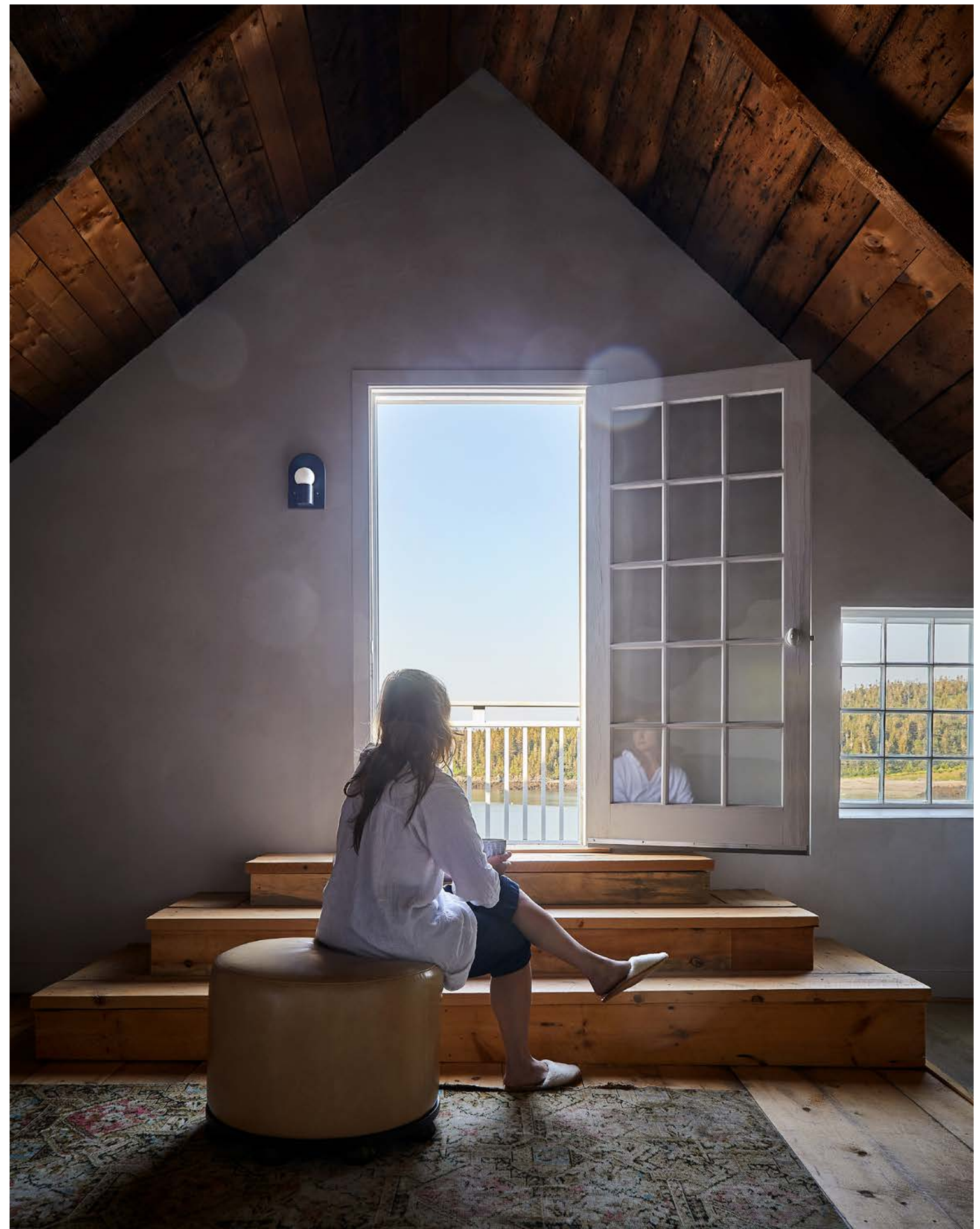




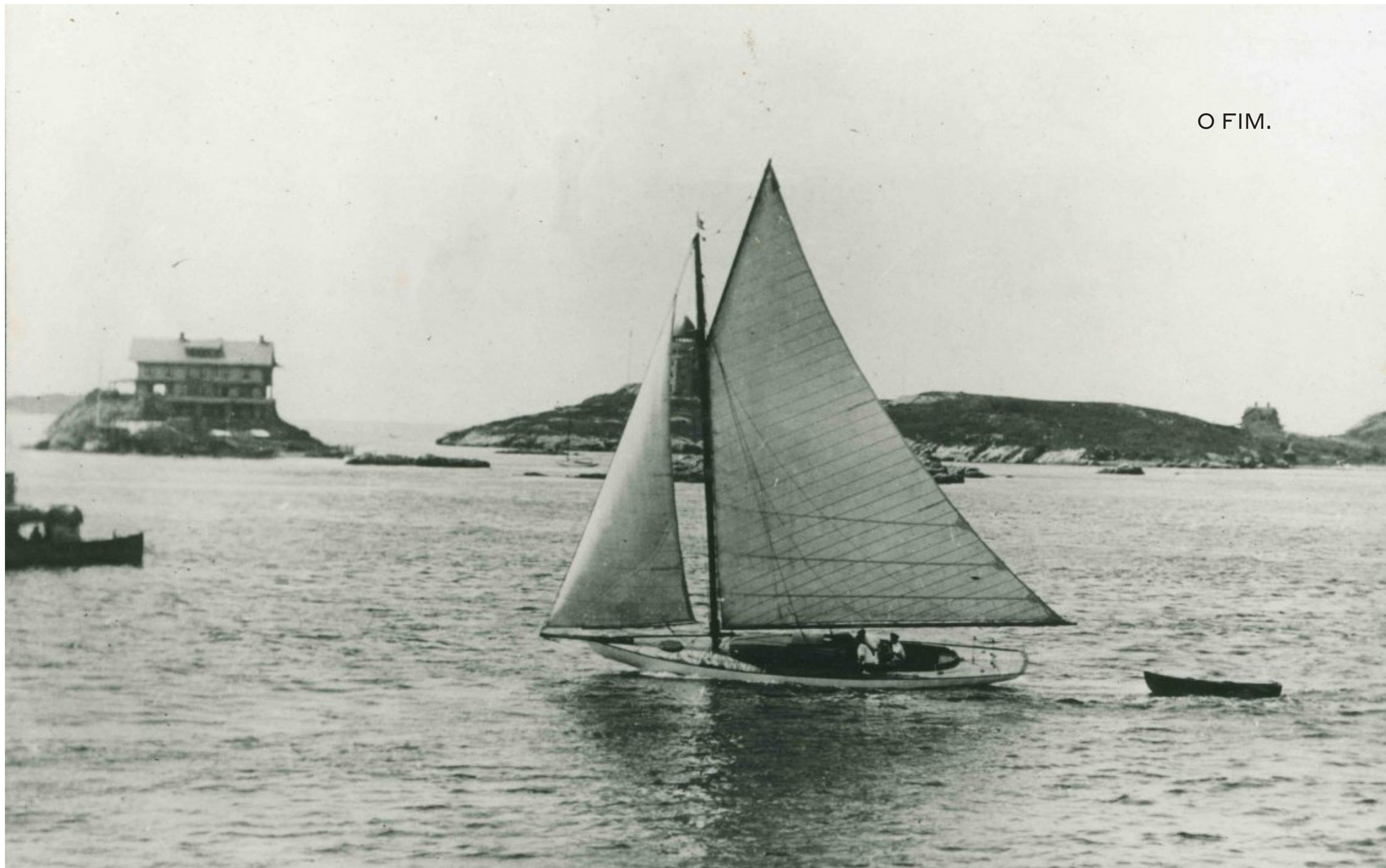


As autumn stealthily approaches, the line between summer and the cooler days ahead is blurred. Swims in the warm ocean water and salty clam shack lunches give way to cool, foggy mornings, the crisp smell of autumn reminding you to throw a light jacket on top of your beach bag. The daily extremes are a sublime and beautiful combination, breathing life into each day, inspiring and shaping the lifestyle of the New England summer.





O FIM.





The Intervalo Collection celebrates a relaxed lifestyle with honest materials and forms inspired by the natural and human landscape of the New England coast.

O&G has always been about place. Situated in a small town on Narragansett Bay, the collective consciousness of the people and landscape influence and inspire everything from our design ideas and craft, to our lifestyle and work ethic.

The unique attributes of our “place” create an aesthetic all their own. The Intervalo Collection is our way of translating, celebrating and sharing our state of mind through furniture which will become part of your life story as well.

A handwritten signature in white ink, appearing to read 'J. B. Hill', located in the bottom right corner of the page.

INTERVALO

(Pause)

Referring to time to recharge and relax.

The animating forces of the New England summer combine with evocative shapes and rich materials to evoke an atmosphere of relaxation. Each piece is beautifully crafted in our Rhode Island Factory.

DOCA LOUNGE

(Dock)

Referring to the traditional dock, a solid platform supported by logs set vertically into the sea bed.

The Doca is generously sized for comfort, a perfect seat to dock your body after a day adrift. Sculptural turned legs lift the form creating a contrast of lightness and heft.

40" W x 39" D x 35" H

Available in a range of upholstery options, legs available in our full range of stain finishes on ash wood, or naturally finished white oak or walnut



*Shown: Watercress Linen Velvet,
Oyster Stain on Ash Legs*

PÂNTANO CABINET

(Marsh)

Referring to grassy salt marshes that teem with life.

The versatile Pântano Cabinet is a play on the expansive horizons and delicate verticals of grassy salt marshes. The lattice doors' delicate geometry alternately screen and reveal the cabinet's interior.

34" W x 20.25" D x 34.25" H

Available in our full range of stain finishes on ash or maple wood, naturally finished white oak or walnut, tumbled or hand polished brass hardware



Shown: Azimuth Stain on Ash, Tumbled Brass Hardware

ÂNCORA SCONCE (Anchor)

Referring to the beacon lit by vessels lying at anchor.

A clean crisp take on ship's lights and classic candle reflectors. The Âncora's hollowed back plate gently diffuses soft LED light and creates an organic interplay of light and wood grain.

9.25" H x 6" W x 4.25" D
Available in our full range of stain finishes on ash wood, and in natural white oak



Shown: Delft Stain on Ash

CAMPINA COFFEE TABLE

(Meadow)

Referring to the grassy meadows of seaside farms.

The Campina Coffee Table has a rounded square top resting on a base of closely spaced spindles. The play of light through the spindles creates a beautiful moiré effect akin to sunshine through windblown grass. The solid wood top is thoughtfully profiled to give the impression of lightness and horizontal expanse.

48" L x 48" W x 14" H

Available in our full range of stain finishes on ash or maple wood



Shown: Oyster Stain on Maple

LULA OTTOMAN

(Squid)

Referring to the squid that are plentiful in our local waters.

Sized to be versatile as stand-alone seating or a foot rest to pair with a louunge or sofa. The Lula Ottoman's carefully upholstered cushion rests atop an animated base of eight faceted bun feet.

26" Ø x 20" H

Available in a range of leather upholstery colors, base available in our full range of stain finishes on ash wood, or naturally finished white oak or walnut



Shown: Taupe Leather ,Kelp Stain on Ash

TORRE FLOOR LAMP

(Tower)

Referring to the lighthouses that punctuate the coast and guide mariners safely to port.

The Torre Floor Lamp is an open wood structure with subtle nautical references. Bold in scale and layered in detail, the Torre stands tall and bright like a New England lighthouse guiding lost ships home.

72" H x 21" Ø

Available in our full range of stain finishes on ash wood, natural linen shade



Shown: Lichen Stain on Ash, Natural Linen Shade



PHOTOGRAPHY

ANGEL TUCKER
COREY WHEELER FORREST JAMESTOWN HISTORICAL
SOCIETY

OANDGSTUDIO.COM
@OANDGSTUDIO